



#### **DURABILITY**

DuPont™ Tedlar® Wallcoverings have increased resistance to scrubbability and abrasion, which will ensure a highly durable wallcovering that can be cleaned and maintained over a long period of time. It is the clear choice of application in high traffic areas such as hospitals, day care centers, hotel, restaurants and public spaces anywhere extremely heavy wear and tear occurs.



#### **MOLD, MILDEW AND BACTERIA**

Third-party laboratory testing has proven that Tedlar® film does not support or provide nutrients to assist in mold and bacteria growth, including E.coli. Laboratory tests have shown that mold and bacteria do not degrade the surface of DuPont™ Tedlar® Wallcoverings. The wallcovering provides extra protection against contamination in hospitals, laboratories, clean rooms, kitchen and patient rooms. When sterilisation is required to remove residual microbes, Tedlar® has extremely high resistance to degradation by chemicals and disinfectants for even the most rigorous disinfection protocols.



#### **FIRE AND SMOKE**

The surface of DuPont™ Tedlar® Wallcovering has low smoke ratings and does not readily burn or support combustion. The surface material is one of the safest materials designed for interiors. ASTM E84 Class A rating. It is also tested in Singapore complying to BS 476 Part 6 Class A & Part 7 Class 1



#### **STAIN RESISTANCE & CLEANABILITY**

DuPont™ Tedlar® has strong chemical resistance and solvent resistance. To eliminate dirt and microorganisms, the surface must be cleaned and disinfected. With a vast variety of stains that are likely to be encountered in high traffic areas, Tedlar® wallcoverings can stand up to the list of the most effective cleaning agents, including bleach and alcohol-based solvents and even the harshest chemicals and disinfectants. Repeated heavy cleaning of stains has no effect on DuPont™ Tedlar® Wallcoverings.



#### **ENVIRONMENTALLY FRIENDLY**

TVOC and formaldehyde emission and heavy metal tests are conducted and test results shows that they are not detected. Product is certified with Singapore Green Building Product 2 ticks rating.



### Specification

Weight	18oz - 21oz/linear yard
Width	54" or 1.37 meter
Length	30 linear yard or 27.4 linear meter
Finish	DuPont™ Tedlar® Film on vinyl
Backing	Non Woven Fabric
Flame Resistance	ASTM E84 Class A BS 476 Part 6 Class A & Part 7 Class 1
Stain Resistance	CC-W-408D
Abrasion Resistance	ASTM D4060-19 1000 cycles
Scrubbability	CC-W-408D ASTM D2486:2017 300 cycles
Microbial Resistance	ASTM G21 & JIS Z 2801 Does not support microbial growth
Green Certification	Singapore Green Building Product 2 Ticks

Available in other weights, colours and patterns.

PVF (Polyvinyl Fluoride) is a material developed by DuPont™ in the 1940s. Tedlar® is its registered trademark, which was put into commercial use in 1961. For over 60 years, it has been widely used in various industries, such as aerospace, building construction, solar outdoor advertising and interior surface protection.

Tedlar® material mainly exists in the form of films of different thicknesses, which can be laminated onto the surface of various materials to form a protective film. Compared with other surface protection films, 100% PVF fluoropolymer films do not add any plasticizer such as acrylics avoiding surface defects such as pinholes and cracks forming a dense surface protection film, preventing deterioration, fading and all kinds of external damage.

### Mold, Mildew and Bacterial Inhibition and Fire Safety

Tedlar® PVF interior surfaces does not support mold growth. In hospital laboratories, sterile rooms, kitchens and patient rooms, the surfaces will provide additional protection against contamination. It is rated 0-1 for mold resistance. Free of formaldehyde and other volatiles, DuPont™ Tedlar® PVF interior surfaces have an aerospace-grade flame retardant and low smoke toxicity, making it one of the safest materials for civil aircraft interiors and interior decoration. The product meets class B1 fire rating of GB8624 2012 and BS 476 Part 6 Class A and Part 7 Class 1.

### Diverse Design, Wide Range of Application

DuPont™ Tedlar® PVF protective film can be laminated into different substrates to provide superior protection for various interior applications. Tedlar® PVF interior surfaces allows for different decoration styles, from delicate embossed textures to elegant glossy surfaces. It helps to create a durable, clean and warm environment for the residential, commercial and healthcare sectors.

### Stain-resistant and Easy Cleaning

Tedlar® PVF interior surface material has excellent chemical resistance and solvent resistance, allowing for repeated disinfection and scrubbing. Stains and residues, even after lingering for a long period of time can be easily cleaned with common household cleaners.

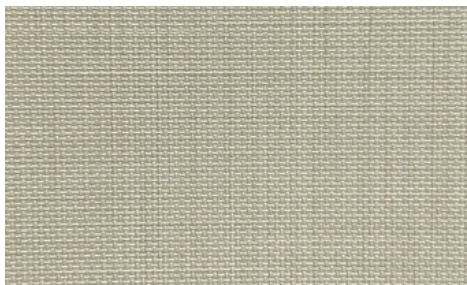
### Durable and Long-lasting like new

Tedlar® provides a protective barrier for the substrate against most stains and cleaning solvents including bleaches, alcohols, ketones (acetone, MEK), strong acids and bases. With excellent abrasion resistance. It ensures that the surface colour remains fresh and durable for years, making it ideal for use in high-traffic areas. Tedlar® resists UV and aging, preventing the surface from fading and yellowing.

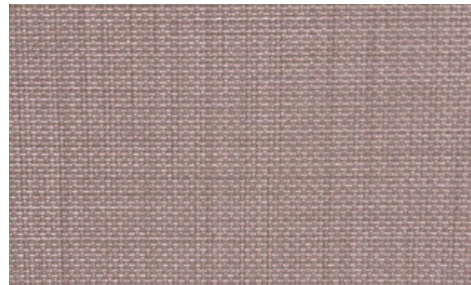




12716A



77904A



77908A



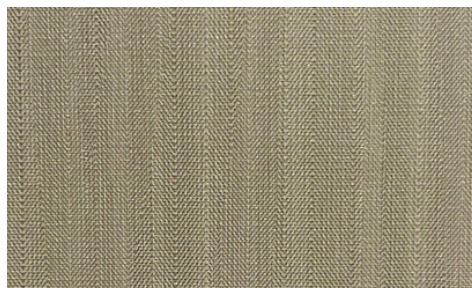
7005A



77008A



77804A



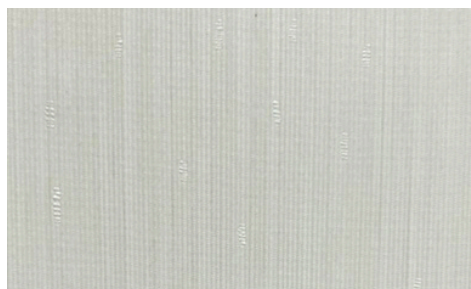
77809A



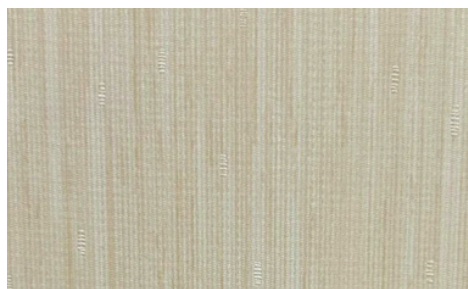
77203A



77202A



58614A



58617A



64501A

**Note:**

- The actual colour of the finishes can vary from the colour shown on this brochure. Actual colours and textures are unable to match 100% via online files or in printed material. We recommend having the actual sample before placing an order.
- There are slight differences in size and weight between different patterns and batches.

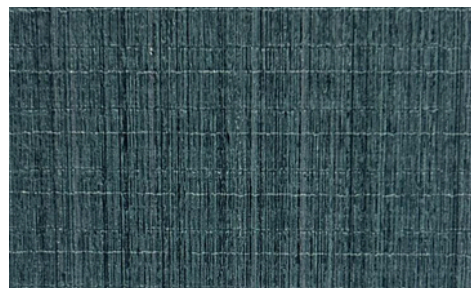




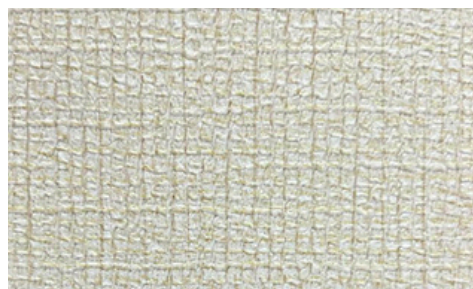
64502A



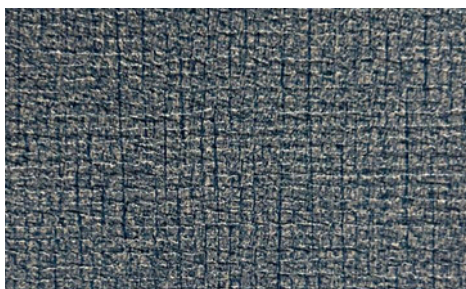
63542A



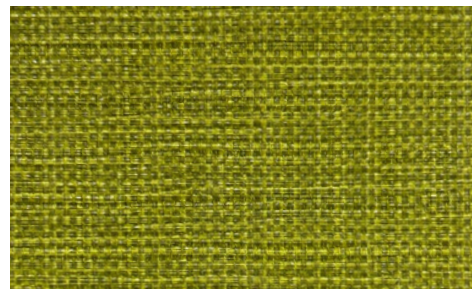
63543A



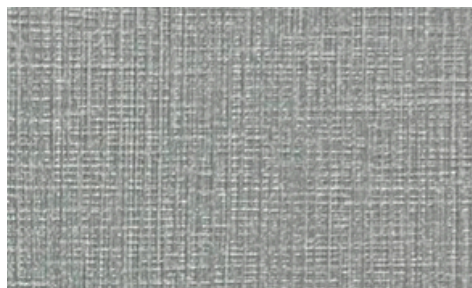
64006A



64002A



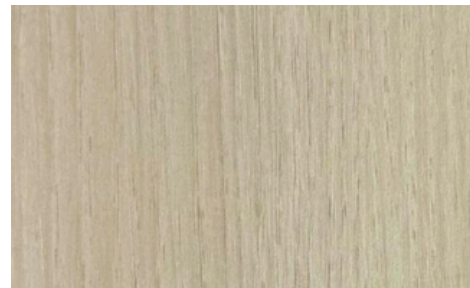
67417A



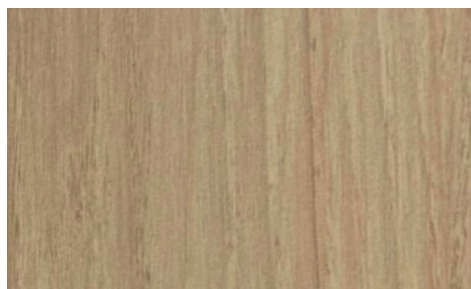
78212A



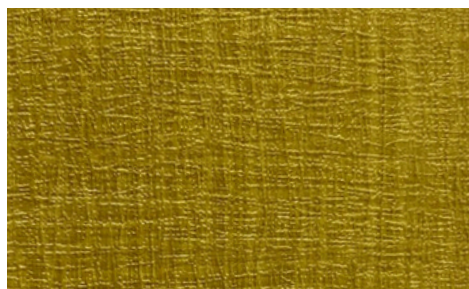
78214A



77704A



77705A



60842A



62368A

**Note:**

- The actual colour of the finishes can vary from the colour shown on this brochure. Actual colours and textures are unable to match 100% via online files or in printed material. We recommend having the actual sample before placing an order.
- There are slight differences in size and weight between different patterns and batches.





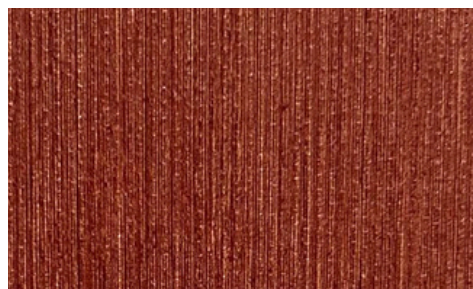
72227A



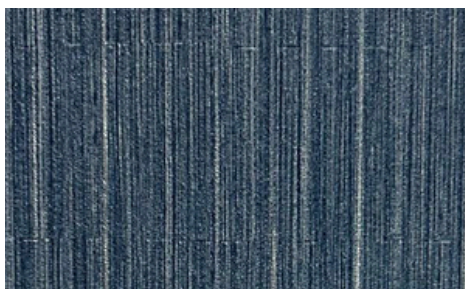
72230A



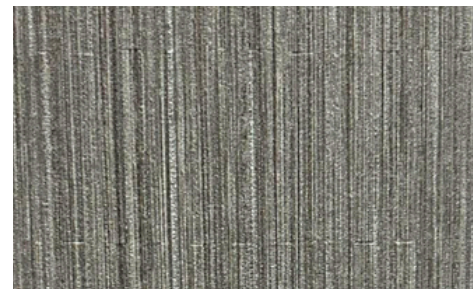
62338A



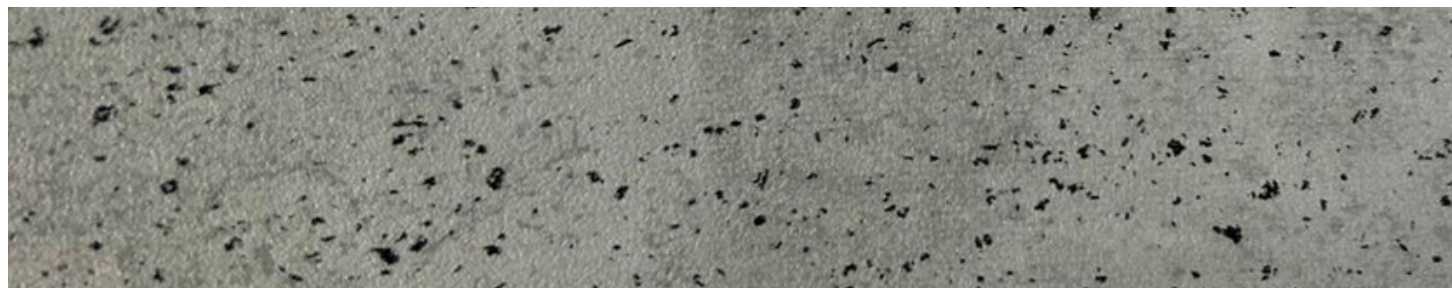
62349A



62914A



62916A



03671A

**Note:**

- The actual colour of the finishes can vary from the colour shown on this brochure. Actual colours and textures are unable to match 100% via online files or in printed material. We recommend having the actual sample before placing an order.
- There are slight differences in size and weight between different patterns and batches.

For more information, please contact:

**ba BUILDING ASSOCIATES (S) PTE. LTD.**  
 建合發（星）私人有限公司

10 Admiralty Street #06-30  
 North Link Building,  
 Singapore 757695  
 Tel: 65 6853 3918 Fax: 65 6583 3919  
 Email: kristine@bldgasso.com.sg